

NWL Primary Care Cancer lead roles (Place) 2025/26

Job Title: Primary Care Cancer Clinical Lead

Department / Place:

Place	Number of roles	Sessions / PAs per week
Triborough (Central and West London, Hammersmith and Fulham)	1	2
Brent, Harrow and Hillingdon	1	2
Ealing and Hounslow	1	1

Hours: As indicated above

Job Type: *Fixed Term – 12 months*

Salary: £325 per session

Work Location: While the majority of the work will take place virtually the postholder may need to travel to various sites across the borough, or occasionally to RMP physical meetings.

The post holder will be expected to attend 1 – 2 meetings a month which are typically held on a Thursday lunchtime.

About RM Partners(RMP)

RM Partners (RMP) is one of 21 National Cancer Alliances, established in 2019 following the publication of the Long Term Plan. Hosted by the Royal Marsden Hospital Trust, we cover NWL and SWL ICSs, supporting 3.7 million people, working in partnership patients and communities across the 14 boroughs we serve, primary care and nine hospitals, supported by North West and South West London ICSs.

The new RMP Cancer Alliance strategy for 2025 – 2030 has a bold shared vision: to ensure our outcomes are world leading, accessible to our population and improve survival. Our strategy aligns with the new 10-year health plan for England, with our initiatives committed to addressing prevention and early diagnosis, embedding technology and AI throughout the cancer pathway, and supporting care closer to home where feasible.

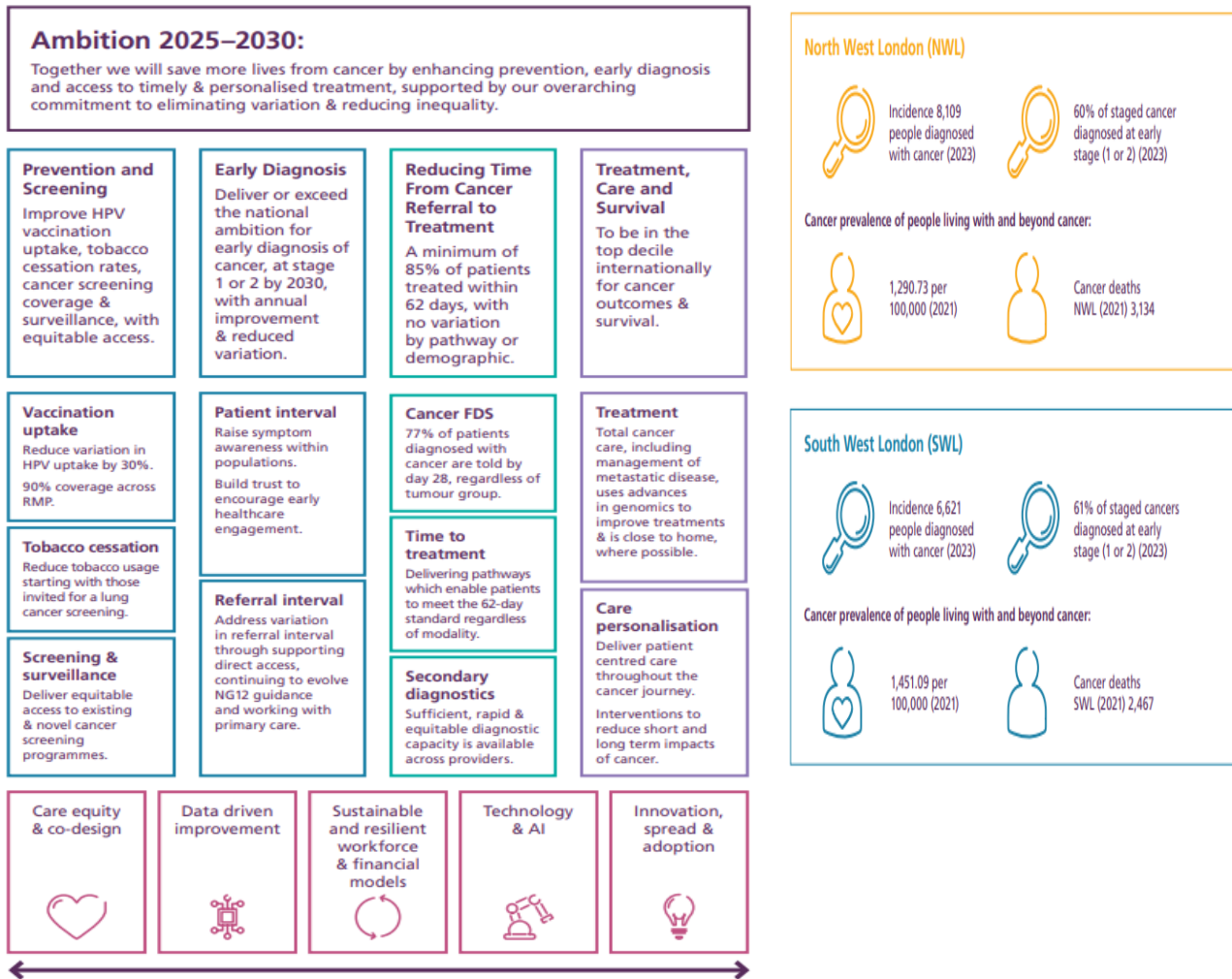
Our ambition is to address variation in incidence, time to treatment and outcomes to improve early diagnosis by a minimum of 5% across RM Partners, importantly reducing variation from the current 8% to ensure equity.

To achieve this, our strategy focuses on 4 key programmes:

- Prevention and Screening
- Early Diagnosis
- Cancer Referral time to treatment
- Treatment, Care and Survival

A summary of our strategy ambition and programmes of work can be seen in figure 1 below.

Figure 1: Strategy ambition and programmes of work



Our goal is simple: to save more lives from cancer through earlier diagnosis by enhancing prevention, early diagnosis and access to timely and personalised treatment, supported by our overarching commitment to eliminating variation and reducing inequality.

About the role

The Early Diagnosis ambition concentrates on 2 main areas of focus:

- Increasing patient awareness of signs and symptoms suggestive of cancer to enable timely presentation to primary care (*Patient Interval*)
- Ensuring that patients are referred in a timely way when first presenting in primary care with signs and symptoms suggestive of cancer to maximise early diagnosis and treatment (*Referral Interval*)

This role will **primarily** support local practices and Primary Care Networks (PCNs) to promote cancer awareness and drive improvements in Early Diagnosis as well as a focus on improving the timeliness and quality of USC referrals, maximising awareness and usage of direct access diagnostics and investigations available to reduce the *referral interval* across all of our patient populations and demographic groups.

Early Diagnosis Enhanced Contract (EDEC) – Ealing only

In 2024/25, RM Partners began an intensive programme to support GP Practices and PCNs in boroughs with lowest early cancer staging.

The scheme incentivises Practices to implement a range of interventions and improvements to cancer systems and processes to support reducing the referral interval across all patient groups/demographics.

The scheme equips Practices to make timely and high quality urgent suspected cancer referrals and works to highlight and reduce inequalities in care.

EDEC Interventions include audits of recent diagnoses, reviewing of safety netting arrangements, case study learning, attending relevant training, meeting to discuss cancer care (PCNs), improving the recording of smoking status as well as other deliverables.

The focus of EDEC delivery in 25/26 will be in **Ealing** with a plan to roll out across all Practices/PCNs in our target boroughs each year, which are selected according to need with those who have the highest degree of late-stage diagnoses targeted first.

Given the size of the borough and the number of PCNs, the place based clinical lead supporting this area will work closely with an existing cancer clinical lead that has been appointed recently – both leads will have a key role in supporting the sign up and delivery of this programme.

PCN DES delivery

The role may also support work around PCN DES Early Cancer Diagnosis requirements which includes:

- Improving referral practice by:
 - o using existing cancer data sources and audit to understand opportunities for timely and effective referral to support earlier diagnosis
 - o ensuring adherence to the most up to date NG12 guidance
 - o promoting use of Faecal Immunochemical Testing (FIT) to patients with signs and symptoms of colorectal cancer – address variation in completion of FIT tests in symptomatic patients by deprivation and develop patient education and safety netting approaches
 - o promoting use of Non-Specific Symptom (NSS) pathways for patients with symptoms that could indicate cancer
 - o promoting the use of teledermatology to support faster skin cancer referrals where available
 - o improving screening uptake for the national cancer screening programmes (Breast, Bowel and Cervical) linking with the Primary Care Cancer Lead for Prevention and Screening.

Other Cancer Workstreams

The role also provides protected time and development support for an experienced GP to also work on a range of exciting and innovative cancer support programmes, in conjunction with a wide range of stakeholders involved in cancer care including a focus for individuals on one of the following workstreams:

- Supporting the interface between primary and secondary care
- Direct Access
- Case finding and compliance
- Personalised Stratified follow up pathways

You will be working collaboratively with the RMP Cancer Alliance Clinical Director for Primary Care for NWL, other borough leads, the Primary Care Cancer Lead for Prevention and Screening as well as RMP and ICS clinical and managerial colleagues.

Primary Duties & Responsibilities

- Attending meetings and forums to promote the work being led by RM Partners to support the early diagnosis of cancer in NWL area/s
- Advocating relevant work programmes to promote the work of RMP and local cancer priorities, including the referral interval programme.
- Engaging with local primary care stakeholders (Practices, PCNs, LMC, ICB PC Team, Federations etc) and wider stakeholders to clinically lead the work and support implementation
- Attending Clinical Lead development sessions with other NWL leads and support the RMP Cancer Alliance Clinical Director for Primary Care for NWL in their duties

EDEC specific responsibilities (Ealing)

- Supporting the planning, development, engagement and rollout of the RMP early diagnosis enhanced contract (EDEC) provision in Ealing
- Securing engagement with, and buy-in to, the EDEC programme from Practices and PCNs
- Attending meetings and forums to promote the work being led by RM Partners to support the early diagnosis of cancer in Ealing.

Person Specification

- Currently working as a GP in specified place/s with at least 3 years' previous experience as a GP
- Current full UK professional registration (full GMC registration and completed MRCP)
- Credibility with peers and local primary care colleagues
- Understanding of emerging health frameworks and policies for cancer care
- Understanding of North West London's & RMP's priorities for cancer care
- Professional interest in cancer care and inequalities relating to this
- Demonstrable change management and / or service redesign experience
- Understanding of the need for meaningful engagement of people with cancer in the development and redesign of services
- Demonstrable skills that would enable progressing facets of the role including:
 - Influencing commissioning or development of cancer services
 - Enabling / facilitating education
 - Supporting alignment of cancer with other long-term conditions in primary care

For an informal discussion about this position, please contact Dr Lucy Hollingworth, RMP Cancer Alliance Clinical Director for Primary Care for NWL at l.hollingworth@nhs.net.

To register your interest, please submit a CV and supporting statement setting out why you want the role and touch on the following areas:

- Knowledge of the most significant issues in your borough for people who may have cancer and how the role could be used to address them.
- Knowledge about the population of your borough and challenges in improving cancer outcomes for the population (across all patient demographics).
- Any specific training or development needs.

This should be emailed to: **rmpartners.primarycare@nhs.net**

Deadline for submissions: 14th March – 5pm