

**Primary Care Cancer lead - Prevention and Screening**

<b>Job Title:</b>	<b>Primary Care Cancer Clinical Lead – Prevention &amp; Screening</b>
<b>Department / Place:</b>	<b>RM Partners - NWL and SWL</b>
<b>Hours:</b>	<b>1 PA a week</b>
<b>Job Type:</b>	<b><i>Fixed Term – 12 months</i></b>
<b>Salary:</b>	<b>£325 per session</b>
<b>Work Location:</b>	<b>While the majority of the work will take place virtually the postholder may need to travel to various sites across the RMP geography , or occasionally to RMP face to face meetings</b>

**About RM Partners(RMP)**

RM Partners (RMP) is one of 21 National Cancer Alliances, established in 2019 following the publication of the Long Term Plan. Hosted by the Royal Marsden Hospital Trust, we cover NWL and SWL ICSs, supporting 3.7 million people, working in partnership with patients and communities. Across the 14 boroughs we serve, primary care and nine NHS acute trusts, supported by North West and South West London ICSs.

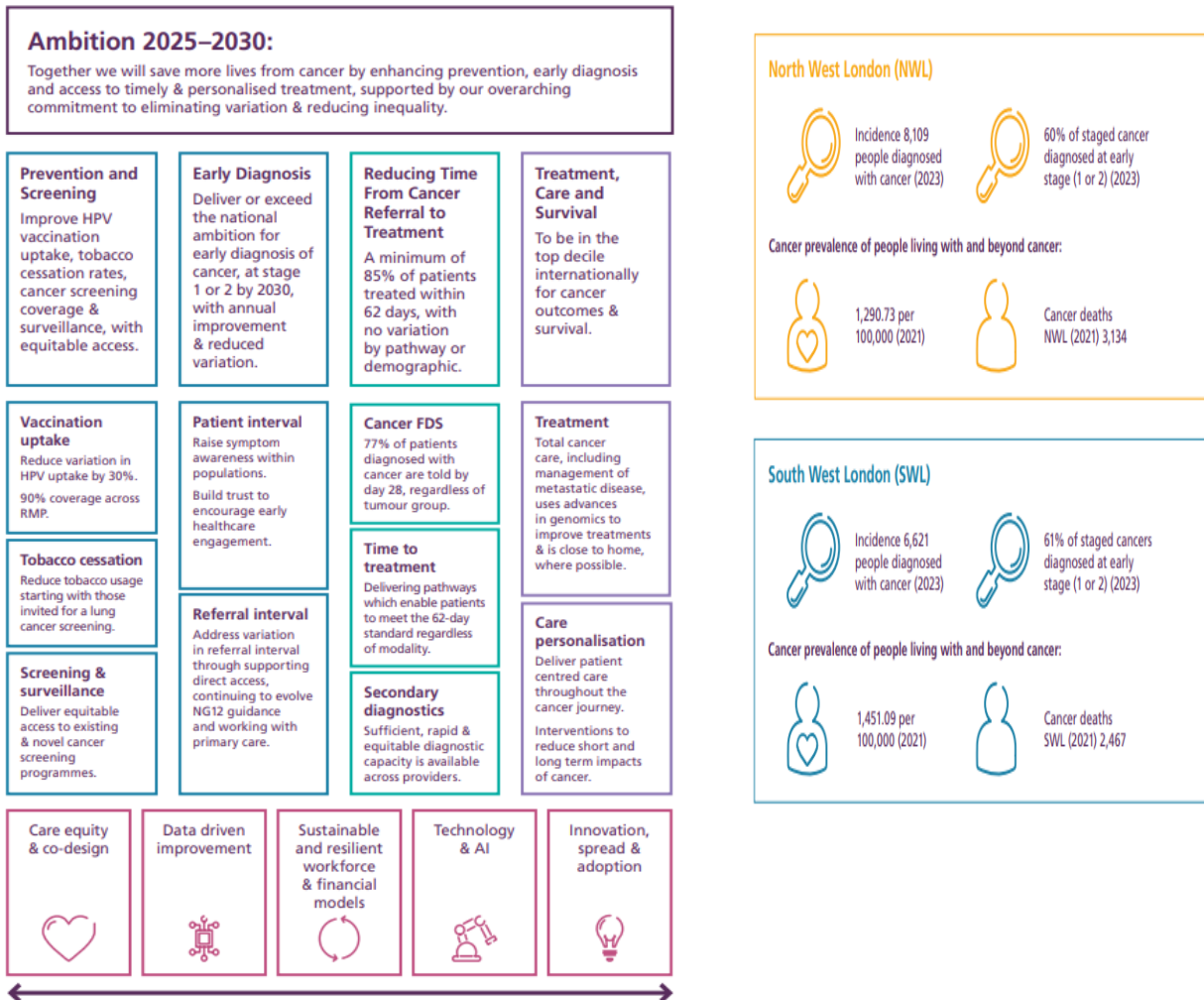
The new RMP Cancer Alliance strategy for 2025 – 2030 has a bold shared vision: to ensure our outcomes are world leading, accessible to our population and improve survival. Our strategy aligns with the new 10-year health plan for England, with our initiatives committed to addressing prevention and early diagnosis, embedding technology and AI throughout the cancer pathway, and supporting care closer to home where feasible. Our ambition is to address variation in incidence, time to treatment and outcomes to improve early diagnosis by a minimum of 5% across RM Partners, importantly reducing variation from the current 8% to ensure equity.

To achieve this, our strategy focuses on 4 key programmes:

- Prevention and Screening
- Early Diagnosis
- Cancer Referral time to treatment
- Treatment, Care and Survival

A summary of our strategy ambition and programmes of work can be seen in figure 1 below:

Figure 1: Strategy ambition and programmes of work



**Our goal is simple:** to save more lives from cancer through earlier diagnosis and enhancing prevention, early diagnosis and access to timely and personalised treatment, supported by our overarching commitment to eliminating variation and reducing inequality.

**About the role**

The Prevention and Screening ambition concentrates on 4 main areas of focus:

- Reducing the variation in **HPV vaccination uptake** across our 14 boroughs by 30%, and work towards the national ambition in securing 90% coverage of females and males at year 8 to enable herd immunity.
- Reduction in **tobacco usage** starting with those invited for a lung cancer screen.
- Ensure that there is **equitable access** to preventative health care i.e the **national Screening programmes** (Bowel, Breast, Cervical, Lung cancer screening)
- Identification and implementation of **novel screening programmes**, case finding and surveillance systems starting with high risk populations and improve identification of high risk individuals (e.g pancreatic, HCC and Lynch syndrome)

You will be working collaboratively with the following:

- RMP Deputy Medical Director
- Borough cancer clinical leads (supporting their interactions with GPs and PCNs around screening)
- RMP Prevention and Screening team
- RMP Informatics Team
- Local authorities (Public Health – screening and immunisation leads)
- School Vaccination services (Vaccination UK (NWL) and South London Children and Young People's Community Immunisations)
- Screening services, including health promotion specialists (bowel and breast)
- NHSE Screening and Immunisations teams
- Relevant colleagues at NWL/SWL ICS
- London Tobacco Alliance

### **Primary duties and responsibilities**

- **Utilise dashboards / datasets available in NWL and SWL to understand and identify:**
  - Population insights in relation to screening participation (Bowel and Cervical)
  - HPV Vaccination uptake by school / borough
  - General population demographics identifying wards / communities for targeted focus, education and intervention.
- **Lead and support discussions with key stakeholders in improving population health / support the delivery of vaccination and screening programmes.**
  - Prevention and Screening Steering Groups are being established to develop a systemwide strategy and plan to improve screening uptake and reduce variation in coverage for key population segments.
- The prevention and screening clinical lead will have opportunities to influence and contribute to primary care educational events supported by RMP in partnership with the ICS to ensure the widest impact on improving screening performance.
- The role holder will also be part of the RMP primary care clinical community of practice, sharing learning with ICS clinical leads and primary care pathway group representatives in order to share learning and influence plans.

### **Person Specification**

- Currently working as a clinician with at least 3 years' previous experience working in either NWL or SWL
- Current full UK professional registration
- Credibility with peers and local primary care colleagues
- Understanding of emerging health frameworks and policies for cancer
- Understanding of either NWL or SWL & RMP's priorities for cancer
- Professional interest in cancer care and inequalities relating to this
- Demonstrable change management and / or service redesign experience
- Understanding of the need for meaningful community engagement with respect to preventative health care to reduce cancer risk
- Demonstrable skills that would enable progressing facets of the role including:
  - Influencing commissioning or improvement of cancer services

- Enabling / facilitating education around prevention and screening
- Supporting greater alignment of cancer prevention and screening with the development of other long-term conditions in primary care

For an informal discussion about this position, please contact Dr Lucy Hollingworth, RMP Deputy Medical Director at [l.hollingworth@nhs.net](mailto:l.hollingworth@nhs.net)

To register your interest, please submit a CV and supporting statement setting out why you want the role and touch on the following areas:

- Knowledge of the most significant issues in your borough for people who may have cancer and how the role could be used to address them.
- Knowledge about the population of your borough and challenges in improving cancer outcomes for the population (across all patient demographics).
- An understanding of what certain groups might not engage with healthcare including cancer screening programmes or vaccinations
- Any specific training or development needs.

This should be emailed to: **[rmpartners.primarycare@nhs.net](mailto:rmpartners.primarycare@nhs.net)**

**Deadline for submissions: 14<sup>th</sup> March 2025 – 5pm**