

NHS NORTH WEST LONDON ICS - MESSAGE TO ALL NWL GP PRACTICES

15th November 2023

This cancer GP bulletin contains updates for GPs and their practice staff on the following:

LUNG CANCER AWARENESS MONTH

- 1. Learn more about the *Be Unforgettable* campaign**

SARCOMA SERVICES

- 2. New Soft Tissue Sarcoma Hub and Spoke services in London**

EUROPAC: REGISTRY FOR FAMILIAL PANCREATIC CANCER AND HEREDITARY PANCREATITIS

- 3. Supporting patients that may be at risk of developing pancreatic cancer**

GATEWAY C: COMMUNICATION ASSETS AND CAMPAIGNS CALENDAR - NOVEMBER

- 4. Supporting key cancer awareness events: lung, pancreatic, mouth and gastric cancer**

PRIMARY CARE CANCER EDUCATION

- 5. Tell us how you would like to receive Cancer Education!**
- 6. Red Whale Cancer Education – still available!**
- 7. South East London Cancer Alliance (SELCA) education resource – Focus on Myeloma**
- 8. FREE Cancer Education Programme.**

LUNG CANCER AWARENESS MONTH

BE UNFORGETTABLE CAMPAIGN

FOR INFORMATION

The focus of the Lung Cancer Awareness Month this year focuses on tackling the misconceptions surrounding lung cancer which can prevent someone from being diagnosed early such as:

- Lung cancer only affects people who smoke
- Lung cancer is an older person's disease
- You'll have a cough if you have lung cancer
- Lung cancer is an instant death sentence.

The '*Be Unforgettable*' campaign aims to challenge these misconceptions, by telling people to forget everything they think they know about lung cancer, so that people experiencing symptoms can be empowered to push for a thorough investigation and speed up their route to diagnosis and treatment.

For more information about the awareness campaign and to access awareness packs with materials to promote in patient waiting rooms, please visit: [Be Unforgettable - Roy Castle Lung Cancer Foundation - Awareness packs](#).

SARCOMA SERVICES

NEW SOFT TISSUE SARCOMA HUB AND SPOKE SERVICES IN LONDON

FOR INFORMATION AND ACTION

*****Please note that this diagnostic pathway does not apply to Bone Sarcoma. ALL suspected BONE Sarcomas must be referred to the Royal National Orthopaedic Hospital service ONLY*****

- A new diagnostic pathway has been developed for adult soft tissue sarcoma referrals in London. Services will be divided into 'hubs' (tertiary services providing treatment and clinical oversight) and 'spokes' (services delivering local diagnostics, from further imaging to pathology).
- The Hubs are the Royal Marsden Hospital (RMH) and the London Sarcoma Service, which is a joint service between the Royal National Orthopaedic Hospital (RNOH) and University College London Hospitals (UCLH).
- In **West London**, Spokes are currently located at Chelsea and Westminster NHS Foundation Trust (either the Chelsea or West Middlesex site), Croydon Health Services and Kingston Hospital.

- The London Sarcoma Service Hub, RMH Hub and all Spoke services are open to receive urgent suspected sarcoma cancer referrals from general practices in all London Integrated Care Systems.

For further information, please contact england.tcstlondon@nhs.net

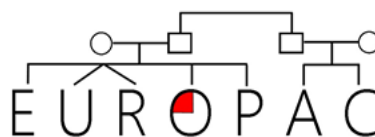
Actions for referrers:

1. Adult patients with a mass that could be a soft tissue sarcoma based on clinical evaluation should be referred for a direct access urgent ultrasound.
2. Based on the ultrasound report and the clinical findings patients with:
 - A mass which could be a soft tissue sarcoma or another tumour (eg lymphoma) should be referred to one of the Spoke services for further evaluation, depending on the clinical picture and and/or patient choice.
 - ***Masses which are highly suspicious of or confirmed as soft tissue sarcomas should be referred directly to one of the Hubs.***

**EUROPAC: REGISTRY FOR FAMILIAL PANCREATIC
CANCER AND HEREDITARY PANCREATITIS**

**SUPPORTING PATIENTS THAT MAY BE AT RISK OF DEVELOPING
PANCREATIC CANCER**

FOR INFORMATION





The European Registry of Hereditary Pancreatic Diseases (EUROPAC) is a registry for families with histories of Familial Pancreatic Cancer and Hereditary Pancreatitis. NHS England is working with EUROPAC to provide a route from the NHS into their national surveillance program which is run across the country for people who may be at high risk of pancreatic cancer. The information sheet attached with this bulletin provides more details about the programme.

Individuals within your GP Practice who have **identified family history or who may be concerned about family history of pancreatic cancer may be eligible** for EUROPAC. Those who join the registry will be able to provide blood and urine samples that will be used to better understand pancreatic cancer, will have an annual risk assessment, and may be offered surveillance (risk dependant).

Patients can self-refer, or GPs can complete a referral form to be sent to local navigator for assessment (see attached).

For more details, please contact local EUROPAC Surveillance Navigator Emma Crowe (emma.crowe12@nhs.net) or
Website: <https://www.europactrial.com>
Email: europac@liverpool.ac.uk
Tel: +(44) 0151 795 1256


HCP Information sheet	 HCP Information Sheet.pdf
EUROPAC referral form	 EUROPAC Referral Sheet V.1.docx

GATEWAY C COMMUNICATION ASSETS AND CAMPAIGNS CALENDAR

SUPPORTING KEY CANCER AWARENESS EVENTS: LUNG, PANCREATIC, MOUTH AND GASTRIC CANCER

FOR INFORMATION

As part of their November edition, they will be highlighting this month's key cancer awareness events including, lung, pancreatic, mouth, and gastric cancer, as well as their national FIT webinar for clinicians.

Gateway C November newsletter	 Spotlight Doc November_NHSEng_
--------------------------------------	---

CANCER EDUCATION

TELL US HOW YOU WOULD LIKE TO RECEIVE CANCER EDUCATION!

FOR INFORMATION

- RM Partners wish to develop a comprehensive package of cancer education to support both clinical and non clinical primary care staff members.
- We would like your feedback to understand the following:

- How you prefer to access cancer related education
 - What specific cancer topics you would like to receive.
- Your feedback will be important in designing a programme that will best support your cancer education needs.

The survey link for providing your feedback is:

<https://www.smartsurvey.co.uk/s/5OW2ZG/>

RED WHALE CANCER EDUCATION – STILL AVAILABLE!

FOR INFORMATION

- RM Partners are very pleased to confirm that we have extended the availability of the FREE Red Whale Cancer Education Programme via their ON DEMAND services until **January 2025**.
- This comprehensive programme supports PCNs and practices in West London to:
 - Identify early signs of cancer.
 - Work as a team to support people living with cancer, meet PCN DES and QOF / IIF requirements.

SOUTH EAST LONDON CANCER ALLIANCE (SELCA) EDUCATION RESOURCE – FOCUS ON MYELOMA

FOR INFORMATION

- SELCA has launched a new education resource to support primary care professionals to identify patients who require an urgent suspected cancer referral.
- The online resource will comprise of seven bitesize modules, each focussing on a specific cancer or group of cancers, and can be completed within 10 minutes. The first module on myeloma - which launched this week - aims to refresh professionals' knowledge of myeloma symptoms and enable colleagues to refer patients with confidence for cancer diagnostic testing.
- Primary care colleagues can access the myeloma module here: <https://bit.ly/intro-to-myeloma>
- We have designed the modules in collaboration with the Guys Cancer Academy, along with clinical input from GP Cancer Leads and secondary care consultants. The remaining six modules - which includes a module on lung cancer and another on ovarian cancer – will all be released before summer 2024.
- You can find out more about the new education resource and why it's important primary care access and complete the modules, here: <https://www.selca.nhs.uk/news/south-east->

[london-cancer-alliance-launches-early-cancer-diagnosis-resource-primary-care-professionals?backclD=240](#)

-

WEST LONDON PRIMARY CARE EDUCATION FREE OPPORTUNITIES

Educational Event	Targeted Audience	Training Dates	How to register / access
<p>Primary Care Cancer Education Programme (across 2 years)</p> <p>Programme to support:</p> <ul style="list-style-type: none"> • GP Practices and PCN teams in identifying early signs of cancer. • Working as a team to support people living with cancer, meet PCN DES and QOF / IIF requirements. <p>Delivered by Red Whale</p>	<p>This course is open to the following PCN staff members:</p> <p>GPs, PAs, Advanced Nurse Practitioners, Practice Nurses, PCN Pharmacists, PCN Paramedics, PCN First Contact, Physiotherapists, PCN Social Prescribers</p> <p>Any other role supporting patients with long term conditions</p>	<p>On Demand Training available to access!</p>	<p>www.gp-update.co.uk/RMP2</p> <p>enter discount code PCCEP21RMP</p>

CANCER WEBINAR PROGRAMME - [West London Primary Care Webinars - YouTube](#)

Date	Time	Topic	Host (s)	Video recording / joining link
12th August 2021	12:30 – 1:30	Urology <ul style="list-style-type: none"> • Overview of Urological Cancer & the Pandemic • Prostate Cancer • Bladder Cancer 	<p>Dr Abhijit Gill, NWL Primary Care Cancer Clinical Director for RM Partners.</p> <p>Mr Manit Arya, Consultant Urology, Charing Cross Hospital & Imperial College Healthcare NHS Trust, London</p> <p>Mr Giles Hellowell, Consultant Urological Surgeon, Imperial College Healthcare NHS Trust, London</p>	Watch the session here
17th November 2021	12:00 - 1:15	Lung <ul style="list-style-type: none"> • Impact of Covid-19 on referrals for Lung Cancer • Covid-19 vs Lung Cancer • Local RMP Pilots • Improving referral management for Lung Cancers • Case studies • Q&A 	<p>Dr Abhijit Gill, NWL Primary Care Cancer Clinical Director for RM Partners.</p> <p>Dr Susannah Bloch, Acute Respiratory Consultant at Imperial and Lung Clinical Pathway Lead at RM Partners</p>	Watch the session here
14th January 2021	12:00 - 1:15	Haematological Cancers <ul style="list-style-type: none"> • Improving Referral Management for Haematological Cancers • Case Studies 	<p>Dr Abhijit Gill, NWL Primary Care Cancer Clinical Director for RM Partners.</p> <p>Dr Anastasia Chew, Haematology Consultant, Chelsea and Westminster Hospital NHSFT</p> <p>Dr Akila Danga, Consultant Haematologist, Hillingdon Hospitals NHSFT</p>	Watch the session here
9th February 2022	1:00 – 2:00	Lower GI <ul style="list-style-type: none"> • Improving Referral Management • FIT 	<p>Dr Bushra Khawaja, GP Cancer Lead – Hillingdon</p> <p>Dr Alistair Myers, Consultant Colorectal Surgeon Specialty Lead for General Surgery and Urology,</p>	Watch the session here

		<ul style="list-style-type: none"> • Case Studies • Support available and resources for Primary Care 	Hillingdon and Mount Vernon Hospitals, Chair of Colorectal Cancer Working Group, RM Partners	
3rd March 2022	1:00 – 2:15	<p>PCN DES and National Screening programmes</p> <ul style="list-style-type: none"> • PCN DES for Early Cancer Diagnosis • PCN Requirements • Hints and Tips to support delivery • Screening programmes • Current screening uptake improvement interventions 	<p>Dr Abhijit Gill, NWL Primary Care Cancer Clinical Director for RM Partners</p> <p>Dr Baldeep Syan, GP Cancer Lead – Hammersmith and Fulham</p>	Watch the session here
5th April 2022	1.00 – 2.00	<p>Personalised Cancer Care</p> <ul style="list-style-type: none"> • Holistic Needs Assessments • Treatment Summaries • ‘What Matters to you?’ 	<p>Dr Abhijit Gill, NWL Primary Care Cancer Clinical Director for RM Partners</p> <p>Katherine Malhotra, Personalised Care Clinical Lead for RM Partners</p> <p>Janice Minter, Lead Cancer Nurse Chair for RM Partners.</p>	Watch the session here
17th May 2022	1:00 – 2:00	<p>Rapid Diagnostic Centres (RDCs)</p> <ul style="list-style-type: none"> • Update on RDCs available in NWL and improving access to RDCs • Case studies to support best practice 	<p>Dr Abhijit Gill, NWL Primary Care Cancer Clinical Director for RM Partners</p> <p>Dr Baldeep Syan, GP Cancer Lead – Hammersmith and Fulham</p>	Watch the session here
28th June 2022	1:00 – 2:00	<p>Gynaecology</p> <ul style="list-style-type: none"> • Improving Referral Management • Case Studies 	John Butler, Consultant Gynaecological Oncology Surgeon, Chair of Gynaecology Cancer Working Group, RM Partners	Watch the session here

		<ul style="list-style-type: none"> Support available and resources for Primary Care 	Dr Lyndsey Williams, GP Cancer Lead for Brent and Ealing	
14th July 2022	1:00 - 2:00	<p>Cancer Hot Topics Prostate Cancer: .Approach to take in delivering this aspect of the DES and what support is available to assist you.</p> <p><u>Use of FIT for suspected colorectal cancer:</u> Clarification of when FIT should be dispensed, the referral pathway and how practices and PCNs can track how patients FIT results are received and entered into patient notes.</p>	<p>Dr Abhijit Gill, NWL Primary Care Cancer Clinical Director for RM Partners</p> <p>Dr Maria Wallace, GP Cancer Lead for Wandsworth.</p> <p>Hasan Qazi, Consultant Urologist at St George's University Hospital, Chair of Urology Cancer Working Group, RM Partners</p>	Watch the session here .
14th September 2022	1 – 2pm	<p>Breast Cancer</p> <ul style="list-style-type: none"> Improving Referral Management Case Studies Support available and resources for Primary Care 	<p>Nicky Roche, Consultant Breast Surgeon, Royal Marsden Hospital, Chair of the Breast Cancer Working Group</p> <p>Jason Lee, Consultant Breast and Reconstructive (Oncoplastic) Surgeon, Clinical Lead for the Breast Service at London North West University Healthcare NHS Trust</p>	Watch the session here .
26th October 2022	12 -2pm	<p>The Good Smear Taker – supporting nervous and anxious patients</p> <ul style="list-style-type: none"> Understanding the anxieties that patients 	<p>Gill Burgess, Lead Nurse for the Croydon cervical screening clinics for nervous and anxious women</p> <p>Marianne Wood, Colposcopist and Hysteroscopist at St Georges</p>	Watch the session here .

		<p>have around HPV, the screening process and how to respond to these.</p> <ul style="list-style-type: none"> • Top tips and communication skills in handling and managing nervous patients in the treatment room. • Develop a greater understanding on the Colposcopy process to support conversations with patients. 		
Wednesday 20th September 2023	1 - 2pm	<p>West London Cancer Update</p> <ul style="list-style-type: none"> • An update to changes to 2ww/FDS and PCN DES • Background to cancer detection via primary care and key data sources • An overview of primary care cancer detection programme and including next steps • Information on Rapid diagnostic centres (RDCs) and NG12 criteria 	Dr Thomas Round (Research Clinical fellow for RM Partners) and Dr Lucy Sneddon (SWL Primary Care Clinical Lead)	Watch the session here

		<ul style="list-style-type: none">• Information on resources and education opportunities		
--	--	--	--	--