

NHS London SelfScreen Opportunistic HPV Self- Sampling Pathway

Launch pack for primary care



Contents

1. Launch pack: summary	3
2. Essential steps for primary care to launch the pathway	3
3. Primary care professional guidance	4
4. HPV self-sample training	4
5. Communications toolkit	4
6. Contact us	5
7. Acknowledgments	5

1. Launch pack: summary

NHSE London is expanding the offer of HPV self-sampling for women and people with a cervix who are overdue cervical screening.

This document contains all of the information and resources needed for the safe and effective implementation of this new pathway in general practice.

2. Essential steps for primary care to launch the pathway

1. **Complete training:** participating practices must ensure that all healthcare professionals (HCPs) who will make the offer have completed the HPV self-sampling training module, [Cervical SelfScreening London](#).

Please Note: HCPs can only make the HPV self-sample offer to eligible patients if they have completed this training.

2. **Order consumables*:** [place the first order of consumables](#), such as the self-collection device and patient instruction sheet, from the CSL website.

3. **Access clinical tools**

Clinical protocols and templates will be published via existing arrangements.

If you have any questions or need further assistance, please contact:

- General pathway queries: NHS London commissioning team england.ypa@nhs.net.
- EMIS-related IT queries: Systems & Facilitation team nclib.itandsystems@nhs.net
- SystemOne-related IT queries: System Development team nhsnw1.pcssystemdev@nhs.net
- tQuest queries: helpdesk@tdlpathology.com

Detailed instructions on how to complete these steps can be found in the 'Primary Care Professional Guidance' detailed below.

*The link to order consumables will be activated once participating practices are confirmed 'live'

3. Primary care professional guidance

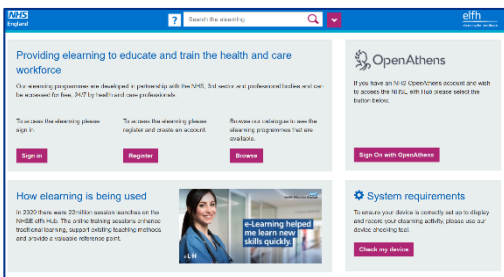


This professional guidance provides healthcare professionals with the background to the NHS London SelfScreen pathway, details on how to make the offer, testing, results reporting, logistics, and error or harm reporting. It also signposts to resources for healthcare professionals and patients, as well as steps required to prepare for implementation.

The professional guidance is located here:

<https://www.england.nhs.uk/london/london-clinical-networks/our-networks/cancer-earlier-diagnosis/screening/cervical-screening-resources/#information-for-general-practice>

4. HPV self-sample training



All participating practices must ensure that all healthcare professionals who will be making the offer have accessed and completed the training developed to support this new pathway.

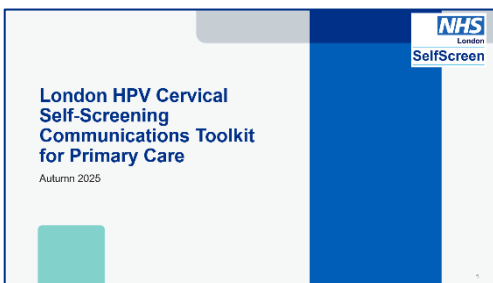
This training module can be accessed via the NHS Learning Hub platform at a time convenient for the

HCP. The healthcare professional must also complete an assessment.

To access the webinar, click here: <https://learninghub.nhs.uk/Resource/70305/Item>

NHS London will also be hosting live drop-in sessions via MS Teams. Details of these sessions have been shared via email to all named leads in the participating GP practices.

5. Communications toolkit



NHS London have developed communications assets to enable healthcare professionals to support eligible patients make an informed choice on participation in the pathway.

These include a plain English information leaflet, detailed written and video instructions, and posters to display in

common areas to raise awareness of SelfScreen.

All of the patient instruction and information assets are available in different languages.

To download the toolkit, click here: <https://www.england.nhs.uk/london/london-clinical-networks/our-networks/cancer-earlier-diagnosis/screening/cervical-screening-resources/#information-for-general-practice>

6. Contact us

All information for the NHS London SelfScreen Opportunistic HPV Self-Sampling Pathway can be found online here: <https://www.england.nhs.uk/london/london-clinical-networks/our-networks/cancer-earlier-diagnosis/screening/cervical-screening-resources/>.

If you have any questions or need further assistance, please contact:

- General pathway queries: NHS London commissioning team england.ypa@nhs.net.
- EMIS related IT queries: NCL Systems & Facilitation team nclib.itandsystems@nhs.net
- SystemOne related IT queries: NWL Primary Care Systems System Development team nhsnw.pcssystemdev@nhs.net
- tQuest queries: helpdesk@tdlpathology.com

7. Acknowledgments

NHS London would like to thank the following organisations for their time and support with the development of the NHS London SelfScreen Opportunistic HPV Self-Sampling Pathway:

- Cervical Screening Administration Service
- Health Services Laboratories
- House of Polish and European Communities
- Islington GP Federation
- Jannaty Women's Social Society
- My Body Back
- NHS England
- NHSE Women's Network
- North Central London Cancer Alliance
- North Central London Integrated Care System
- North East London Cancer Alliance
- North East London Integrated Care System
- North of England CSU
- North West London Integrated Care System
- Queen Mary University
- RM Partners (NW and SW London Cancer Alliance)
- South East London Cancer Alliance

- South East London Integrated Care System
- South West London Integrated Care System
- TransPlus
- V Good
- YouScreen

NHS London would like to acknowledge the advice and support of Mairead Lyons & Anita Lim (YouScreen research team)